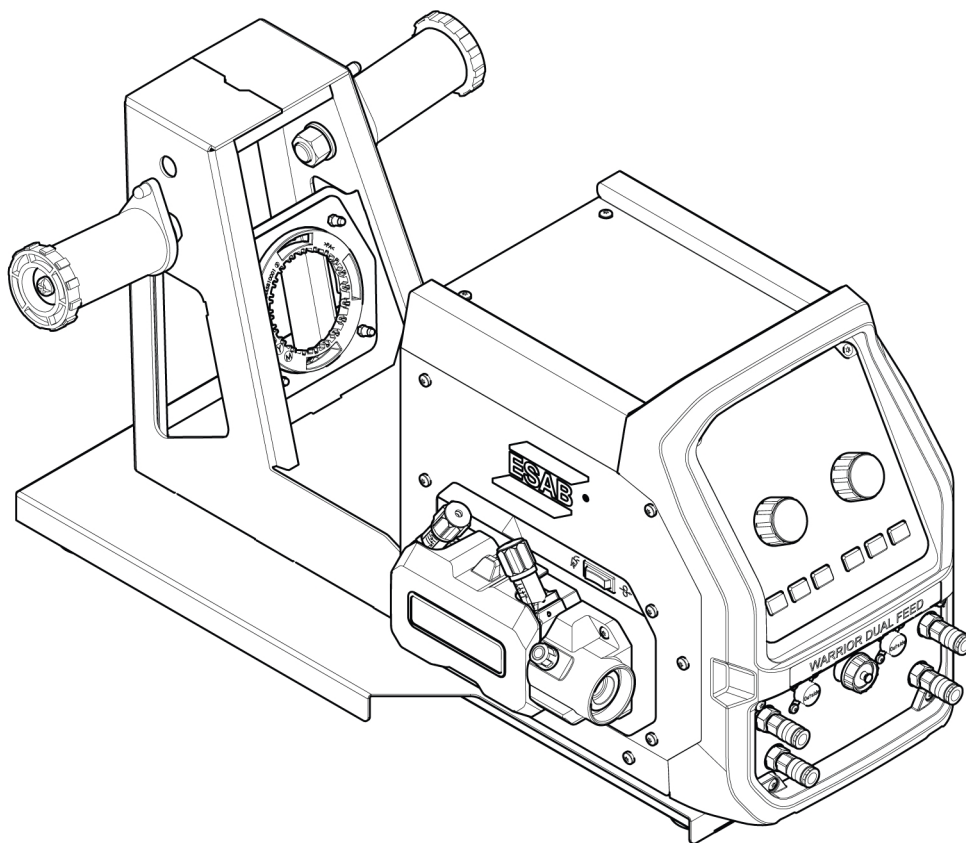


# Warrior™ DualFeed



## Spare parts list

<b>Ordering no.</b>	<b>Product</b>	<b>Notes</b>
0448 900 880	Warrior™ DualFeed	CSA

Spare parts may be ordered through your nearest ESAB dealer, see [esab.com](https://www.esab.com). When ordering, please state product type, serial number, denominations and ordering numbers according to the spare parts list. This facilitates dispatch and ensures correct delivery.

Maintenance and repair work should be performed by an experienced person, and electrical work only by a trained electrician. Use only recommended spare parts.

TABLE OF CONTENTS

---

- 1 SPARE PARTS ..... 4**
  - 1.1 Housing module ..... 4**
  - 1.2 Spool bracket module ..... 6**
  - 1.3 Connection module ..... 8**
  - 1.4 User interface module ..... 10**
  - 1.5 PCB module ..... 11**
  - 1.6 Feeding module, right and left ..... 13**
  - 1.7 Feeder mechanism module ..... 16**

# 1 SPARE PARTS

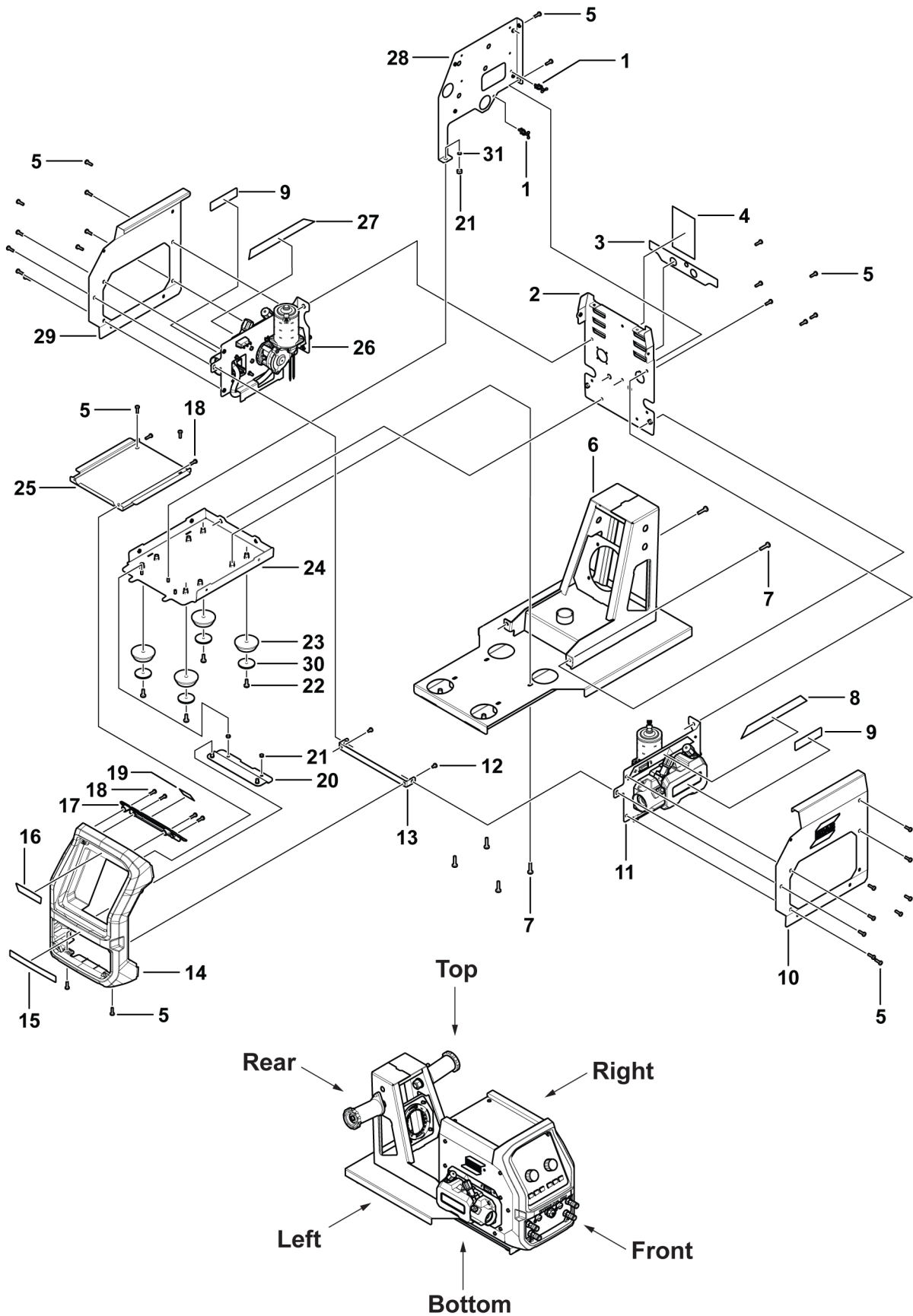
## 1.1 Housing module

**C = Component designation in the circuit diagram**

Item	Qty	Ordering no.	Denomination	Notes	C
1	2		Cable bearer	Hole 4 mm	
2	1		Cover, rear	See item 101	
3	1		Overlay, rear	See item 101	
4	1		Plate, rating		
5	30		Screw	MRT M5 × 16 black	
6	1		Bracket, spool		
7	6		Screw	MRT M6 × 25 black	
8	1	A000 100 782	Overlay, right		
9	2		Overlay, precidrive cover		
10	1	A000 100 619	Cover, right		
11	11		Feeding module, right		
12	2		Screw	MRT M5 × 8 black	
13	1	A000 100 707	Bracket, housing		
14	1		Panel, front	See item 102	
15	1		Decal, name	See item 102	
16	1		Decal, ESAB logo	See item 102	
17	1	0447 996 760	Decorative part, top		
18	6		Screw	Remform 4 × 12 black	
19	1		Decal, ESAB logo		
20	1	A000 101 089	Bracket, bottom		
21	3		Nut	6K steel 8.8 M5	
22	4		Screw	MRT M6 × 16	
23	4	A000 101 646	Feet	LHF/DTE	
24	1		Bracket, base		
25	1	A000 100 622	Cover, top		
26	1		Feeding module, left		
27	1	A000 100 783	Overlay, left		
28	1		Wall, intermediate		
29	1	A000 100 621	Cover, left		
30	4		Washer, foot		
31	1		Lock, washer	AZ D10/5.3	

1 SPARE PARTS

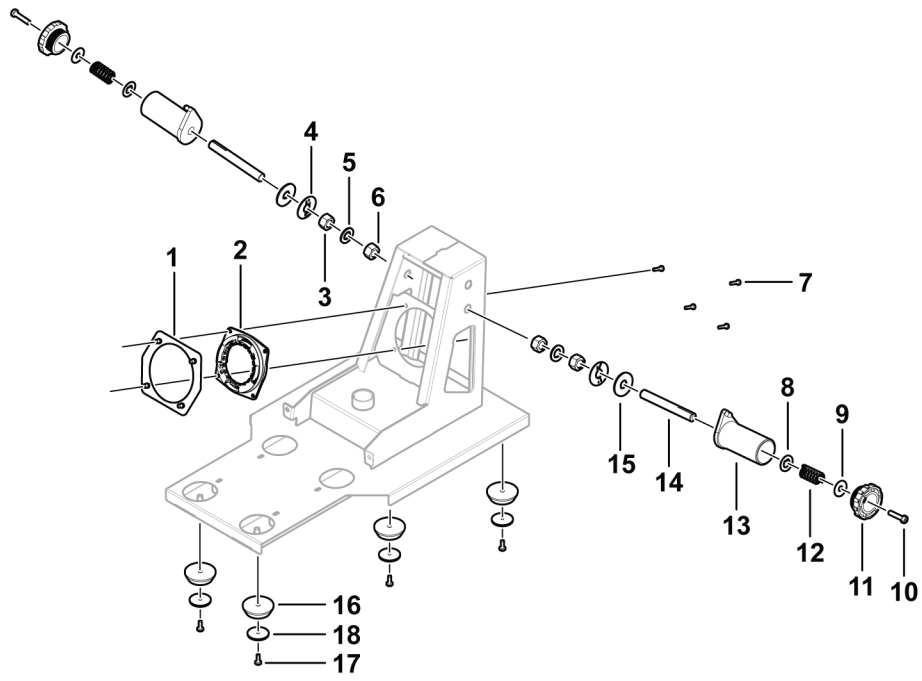
Item	Qty	Ordering no.	Denomination	Notes	C
101	1	0464 752 726	Kit, rear panel	Including items 2 and 3	
102	1	0464 752 724	Kit, front panel	Including items 14, 15 and 16	



## 1.2 Spool bracket module

**C** = Component designation in the circuit diagram

Item	Qty	Ordering no.	Denomination	Notes	C
1	1		Bracket, strain relief		
2	1	0445 810 001	Inner part, strain relief		
3	2		Nut	6K steel 8.8 M16, PN-EN 24032, see item 201	
4	2		Washer	ZP-21, See item 201	
5	2		Washer	BRB	
6	2		Nut, hexagon	M16	
7	4		Screw	MRT M5 × 20 black	
8	2		Washer	See item 201	
9	2		Washer	D=30/8.5 × 1.5, see item 201	
10	2		Screw	M8 × 35, PN-EN ISO, 7045, see item 201	
11	2	0349 490 167	Screw	See item 201	
12	2		Spring	See item 201	
13	2		Body	See item 201	
14	2		Pin	See item 201	
15	2		Washer, friction	See item 201	
16	4	A000 101 646	Feet	LHF/DTE	
17	4		Screw	MRT M6 × 16 -8.8 black	
18	4		Washer, foot		
Item	Qty	Ordering no.	Denomination	Notes	C
201	1	0349 305 150	Kit, brake hub	Including items 3, 4, 8, 9, 10, 11, 12, 13, 14 and 15	



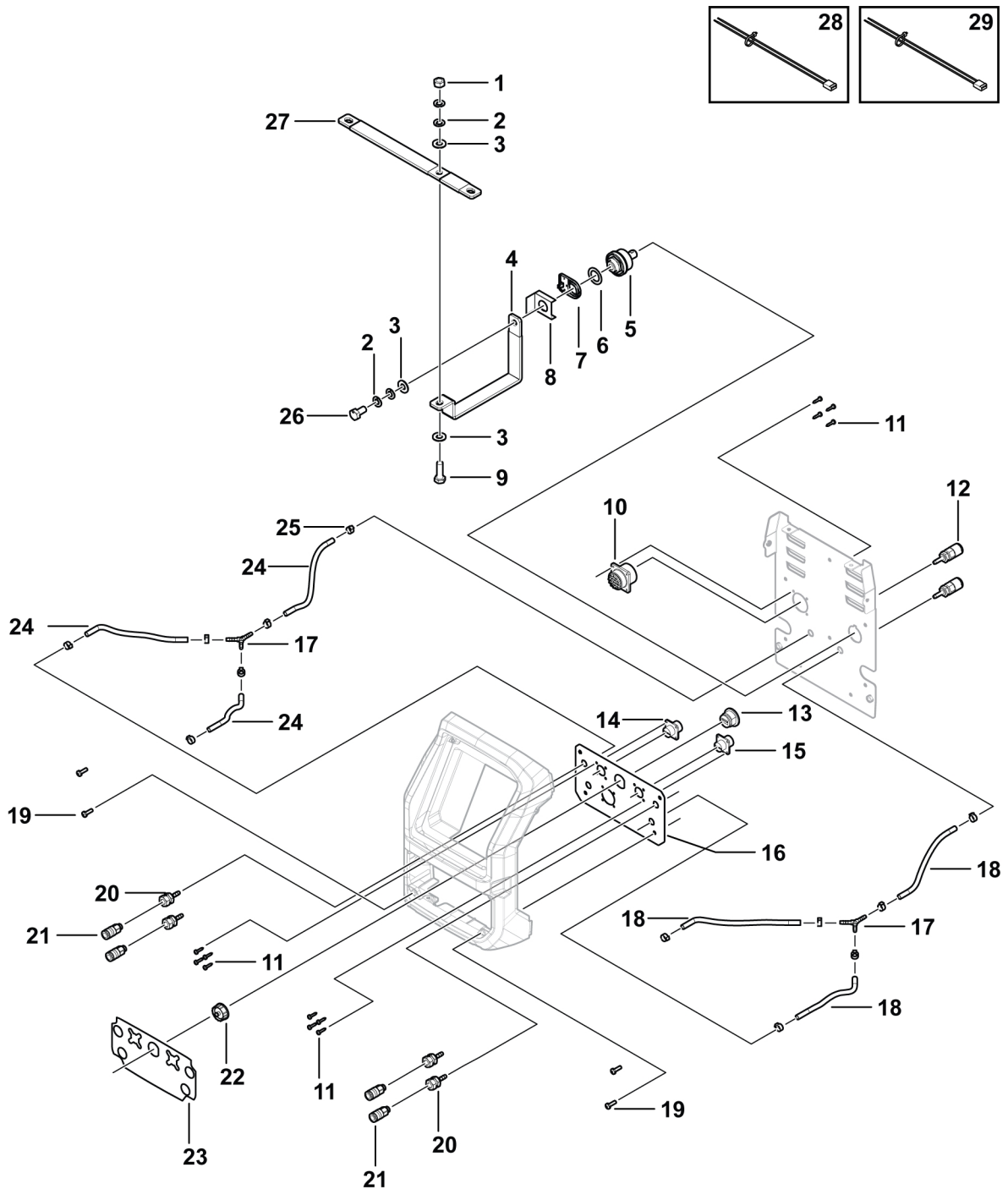
## 1.3 Connection module

**C** = Component designation in the circuit diagram

Item	Qty	Ordering no.	Denomination	Notes	C
1	1		Nut	6K steel 8.8 M10	
2	4		Washer, spring	25 × 12.2 × 1,5	
3	3		Washer	BRB D22/10.5 × 2	
4	1		Bar, copper, main		
5	1	0160 609 881	Connector, machine		
6	1	0466 325 001	Gasket	MIGCUT	
7	1		Switch, reed	See item 301	13AP4
8	1		Sheet, insulation	See item 301	
9	1		Screw	M6S 10 × 30	
10	1	A000 100 822	Harness, input cable, with connector	Connection between 19-pole control cable connector and control board (13AP1) CN4, CN36	
11	12		Screw	RTS ST3.59.5 black	
12	2	0446 967 002	Quick connector	16-mar	
13	1	0445 172 880	Harness, USB		
14	1	A000 100 825	Harness, trigger, left, with connector	Connection between left trigger cable connector and adaptor board (13AP2) CN19	
15	1	A000 100 826	Harness, trigger, right, with connector	Connection between right trigger cable connector and adaptor board (13AP2) CN12	
16	1		Bracket, front	See item 302	
17	2	0194 244 001	Y-connection		
18	0.12 m	0349 487 059	Hose, red	D5 × 1 5 mm PCV	
	0.26 m				
	0.26 m				
19	4		Screw	MRT M5 × 16 black	
20	4	0445 746 001	Brass fitting		
21	4	0445 745 003	Quick connector, brass		
22	1	0445 331 001	Cover, USB		
23	1		Overlay, front	See item 302	
24	0.12 m	0349 482 829	Hose, blue	D5 × 1 5 mm PCV	
	0.26 m				
	0.26 m				
25	12		Hose clamp	10	
26	1		Screw	M6S 10 × 20	
27	1		Bar, copper		

1 SPARE PARTS

Item	Qty	Ordering no.	Denomination	Notes	C
28	1	A000 100 824	Harness, reed switch	Connection between control board (13AP1) CN8 and reed switch (13AP4).	
29	1	A000 100 830	Harness, dual capacitor	Connection between copper bar and feeder chassis	
Item	Qty	Ordering no.	Denomination	Notes	C
301	1	0464 667 894	Kit, switch	Including items 7 and 8	
302	1	0464 752 723	Kit, front panel mounting bracket	Including items 16 and 23	

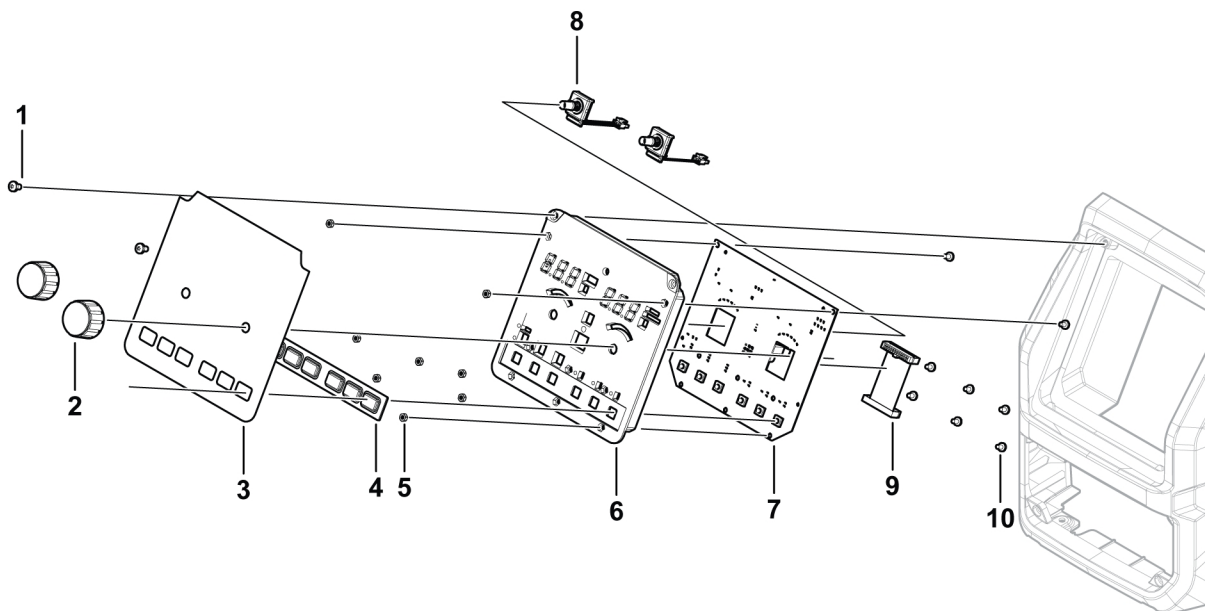


## 1.4 User interface module

C = Component designation in the circuit diagram

Item	Qty	Ordering no.	Denomination	Notes	C
1	2		Screw	MRT M4 × 8 black, see item 401	
2	2	0321 475 893	Knob, encoder	D36-1/4IN	
3	1		Overlay, HMI	See item 401	
4	1		Pad, key	See item 401	
5	8		Nut	6K steel 8.8 M4, see item 401	
6	1		User interface, external frame	See item 401	
7	1	0440 227 882	Panel board, PCBA		
8	2	0193 912 005	Encoder complete		
9	1	0193 700 709	Harness, ribbon cable		
10	8		Screw	MRT M4 × 6 black, see item 401	

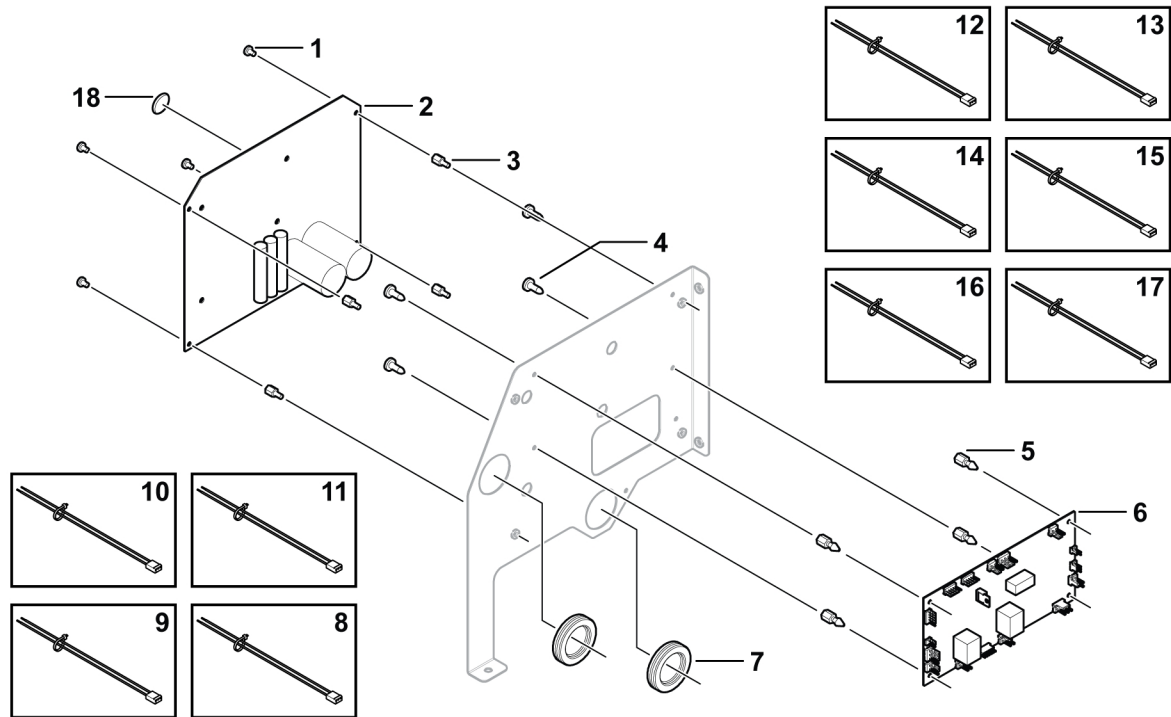
Item	Qty	Ordering no.	Denomination	Notes	C
401	1	0464 752 728	Kit, HMI frame	Including items 1, 3, 4, 5, 6, and 10	



## 1.5 PCB module

**C = Component designation in the circuit diagram**

Item	Qty	Ordering no.	Denomination	Notes	C
1	4		Screw	MRT M4 × 6 black	
2	1	0440 232 881	PCBA, control	Included item 18	13AP1
3	4		Spacer	M4 × 5	
4	4		Screw	RTS ST3.5 × 9.5 black	
5	4		Spacer	TCBS-6R	
6	1	0440 799 880	Board, adaptor		13AP2
7	2	0194 069 003	Rubber inlet	37 mm	
8	1	A000 100 816	Cable, encoder interface	Connection between control board (13AP1) CN22 and adaptor board (13AP2) CN4	
9	1	A000 100 817	Cable, motor interface	Connection between control board (13AP1) CN30 and adaptor board (13AP2) CN8	
10	1	A000 100 818	Cable, solenoid interface	Connection between control board (13AP1) CN24 and adaptor board (13AP2) CN7	
11	1	A000 100 819	Cable, trigger interface	Connection between control board (13AP1) CN13 and adaptor board (13AP2) CN6	
12	1	A000 100 820	Cable, solenoid signal, left	Connection between left solenoid and adaptor board (13AP2) CN10	
13	1	A000 100 821	Cable 2, solenoid, signal, right	Connection between right solenoid and adaptor board (13AP2) CN11	
14	1	A000 100 823	Harness, input interface	Connection between control board (13AP1) CN14 and adaptor board (13AP2) CN1	
15	1	A000 100 827	Harness, torch control	Connection between control board (13AP1) CN11 and adaptor board (13AP2) CN21	
16	1	A000 100 828	Harness, switch, left	Connection between control board (13AP1) CN7 and left (QF1, right (QF2) wire inch/gas purge switch	
17	1	A000 100 829	Harness, switch, right	Connection between control board (13AP1) CN9 and right (QF2) wire inch/gas purge switch	
18	1		Battery, lithium coin cell	3V, 140 mAh, CR-1632/BN	



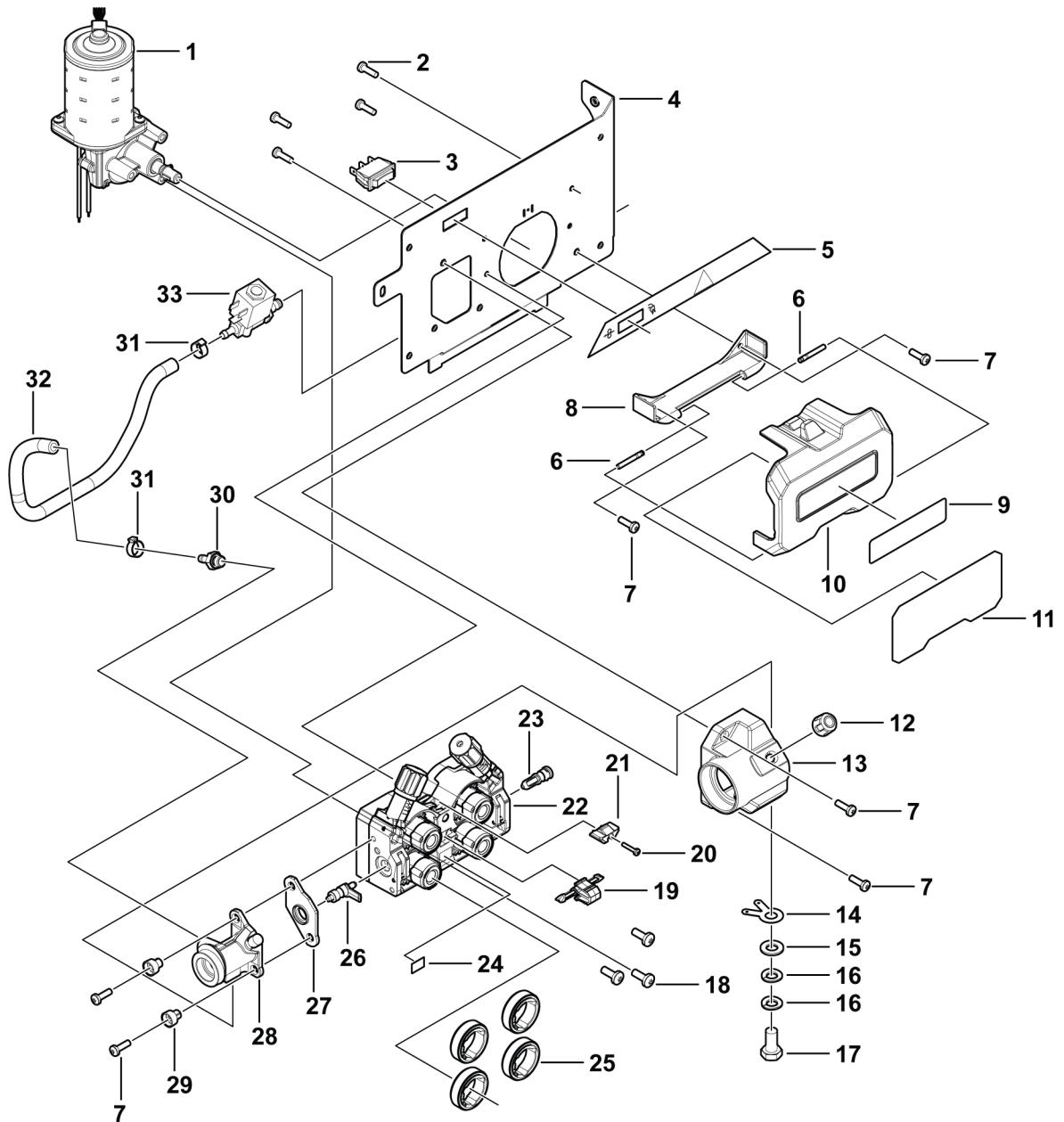
## 1.6 Feeding module, right and left

**C** = Component designation in the circuit diagram

Item	Qty	Ordering no.	Denomination	Notes	C
1	2	0465 827 881	Drive unit wire feeder		
2	4		Screw	Reform 5 × 16	
3	2	0349 314 560	Switch, inch / gas purge	RB1 (ON)-OFF-(ON)	
4	1	A000 101 094	Feeding bracket, right		
		A000 101 096	Feeding bracket, left	Not shown in the illustration	
5	1	A000 100 782	Overlay, right		
		A000 100 783	Overlay, left	Not shown in the illustration	
6	4		Pin	See item 601	
7	8		Screw	MRT M5 × 16 black, see item 601	
8	2		Hinge, precidrive cover	See item 601	
9	2		Overlay, precidrive cover	See item 601	
10	2		Cover, precidrive	See item 601	
11	1		Inside overlay, precidrive cover, right	See item 601	
			Inside overlay, precidrive cover, left	Not shown in the illustration, see item 601	
12	2	0446 026 002	Screw, thumb		
13	1	A000 100 708	Cover, tweco, right		
		A000 100 709	Cover, tweco, left	Not shown in the illustration	
14	2	0349 312 952	Connector, flat pin		
15	2		Washer	10.5 A2K	
16	4		Washer, spring		
17	2		Screw	M6S M10 × 20	
18	6		Screw	MRT M6 × 16	
19	2	0446 080 882	Wire guide, middle	Steel wire, 2 mm	
20	2		Screw	MRT M3 × 16 black	
21	2	A000 101 084	Cover lock		
22	2	0445 630 880	Feeder mechanism	See " <i>Feeder mechanism module</i> ", page 16	
23	2	0445 822 001	Wire guide, inlet		
24	2	0445 916 001	ESAB logo Silver		
25	8	0445 850 004	Feed roller		
26	2	0445 830 883	Wire guide, outlet		
27	2	0445 815 001	Insulator, torch connector		
28	1	0445 809 004	Tweco 4 connector, right		
		0445 809 002	Tweco 4 connector, left	Not shown in the illustration	

1 SPARE PARTS

<b>Item</b>	<b>Qty</b>	<b>Ordering no.</b>	<b>Denomination</b>	<b>Notes</b>	<b>C</b>
29	4	0445 814 001	Insulator, screw		
30	2	0445 856 001	Brass fitting		
31	4		Hose clamp	14.5	
32	0.322 m	0445 699 102	Hose	Rubber, D5	
33	2	0193 054 007	Valve, solenoid	With 42 V conexion and nut	
34	1	0193 260 151	Connector 3-pol MTA 156, right	Not shown in the illustration	
35	1	0193 260 181	Connector cover 3-pol MTA 156, right	Not shown in the illustration	
36	1	0193 260 150	Connector 2-pol MTA 156, left	Not shown in the illustration	
37	1	0193 260 180	Connector cover 2-pol MTA 156, left	Not shown in the illustration	
<b>Item</b>	<b>Qty</b>	<b>Ordering no.</b>	<b>Denomination</b>	<b>Notes</b>	<b>C</b>
601	1	0464 752 725	Kit, precidrive cover	Including items 6, 7, 8, 9, 10, and 11	



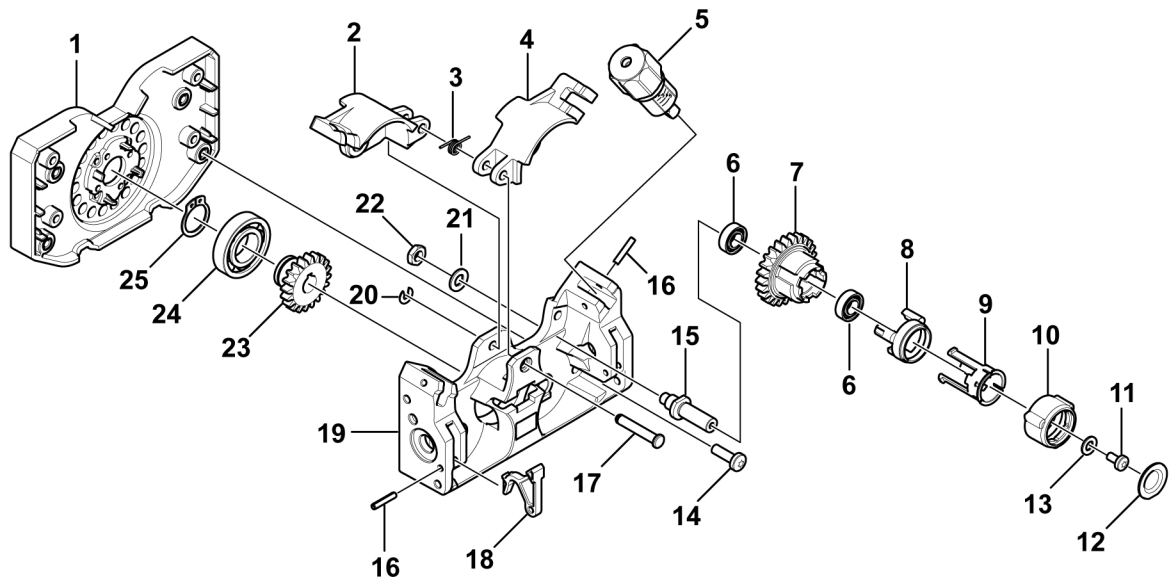
## 1.7 Feeder mechanism module

**C = Component designation in the circuit diagram**

Item	Qty	Ordering no.	Denomination	Notes	C
1	1		Plate, back	See item 704	
2	1	0445 818 002	Swing arm, left	See item 704	
3	1	0445 839 001	Lift spring	See items 702 and 704	
4	1	0445 818 001	Swing arm, right	See item 704	
5	2	0445 831 880	Tensioner unit assembly		
6	8		Bearing	8 × 16 × 5, see item 703	
7	4		Gear hub	See item 703	
8	4		Driver	See item 703	
9	4		Retainer	See item 703	
10	4		Bezel	See item 703	
11	4		Screw	MRT M4 × 8, see item 703	
12	4		Cover	See item 703	
13	4		Washer	M4, see item 703	
14	4		Screw	MRT M5 × 16	
15	4	0445 841 001	Shaft, feed roll		
16	4		Spring pin	Ø3 × 16, see item 704	
17	1		Shaft, swing arm	See items 702 and 704	
18	1	0446 059 001	Nozzle lever		
19	1		Plate, front	See item 704	
20	1		Circlip	Ø6/4, see item 702	
21	4		Cup spring		
22	4	0349 312 091	Thin nut, hexagon		
23	1	0445 820 001	Motor pinion	See items 703 and 704	
24	1		Bearing	17 × 35 × 8 mm, see item 701	
25	1		Lock ring	Ø17, see item 701	

Item	Qty	Ordering no.	Denomination	Notes	C
701	1	0464 667 883	Bearing and lock ring kit	Including items 24 and 25	
702	1	0464 667 887	Swing arm shaft kit	Including items 3, 17, and 20	
703	1	0464 667 893	Gear hub complete kit	Including items 6-13	
704	1	0464 667 886	Feeder mechanism kit	Including items 1, 2, 3, 4, 16, 17, 19, and 23	





# A WORLD OF PRODUCTS AND SOLUTIONS.



For contact information visit [esab.com](http://esab.com)

ESAB Corporation, 2800 Airport Road Denton, TX 76207, USA, Phone +1 800 378 8123

[manuals.esab.com](http://manuals.esab.com)

